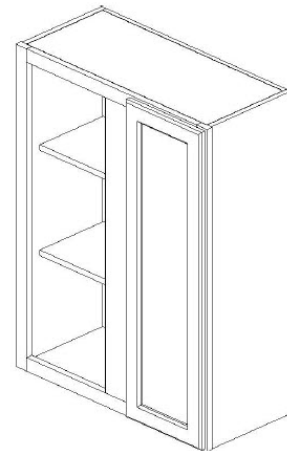


Assmby Instruction

Wall Blind Corner



Code	Description	Qty.
A	Side Panel (L/R)	2
B	Front Frame	1
C	Back Panel	1
D	Bottom/Top Panel	2
E	Door	1
F	Shelf (Qty. depends on Cabinet height)	2 or 3
G	Plastic Shelf Clips (Qty. depends on Shelf quantity)	8 or 12
H	Hinges	2



For Product lines:
 Modern Gray/Frenso Gray Shaker/Anaheim
 Gray/Beech Espresso/Cinnamon Shaker

Required Tools:

Power Drill



EASY ASSEMBLY METAL CLIP SYSTEM

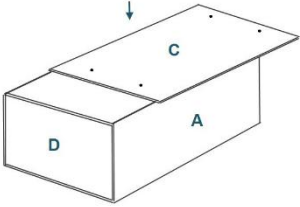
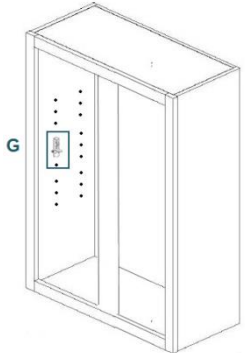
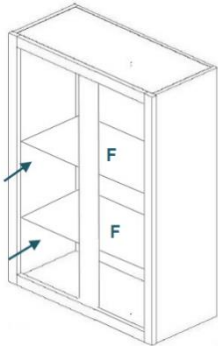
- Align Clips ① and ②
- Slide ① into ②
- Insert locking screw into clip pair
- Tighten all screws

Step-by-Step Instruction:

Step 1		Step 2	
<p>Lay Front Frame (B) flat, grooves facing upward</p> <p>Insert Side panels (A) on (B) and secure with metal clips (Refer to Metal clip system above)</p>		<p>Slide bottom/Top panels (D) into grooves of A and B</p>	

Assmly Instruction

Wall Blind Corner

Step 3		Step 4	
<p>Insert back panel (C) onto A and D and secure with metal clips (Referal to metal clip system above)</p> <p>Secure with screws from the bottom of back panel (C)</p>		<p>Insert Plastic shelf clips (G) onto pre-drilled holds on Side panels A</p>	
Step 5	Step 6		
<p>Side in shelf (F) and make sure the finished front edge facing out</p>		<p>Attach Hinge (H) on the face frame, install door (E) onto hinge on both side</p> <p><i>*Door can be installed on left or right, depending on the blind side, install accordingly*</i></p>	