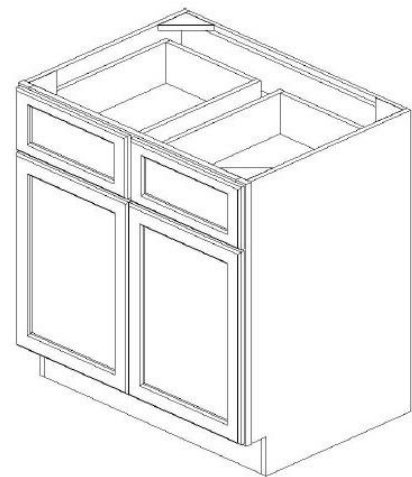


Assmby Instruction

Base Cabinet – Double Doors & Drawers



| Code | Description | Qty. |
|------|---------------------------------|---------|
| A | Side Panel (L/R) | 2 |
| B | Front Frame | 1 |
| C | Back Panel | 1 |
| D | Bottom Panel | 1 |
| E | Shelf | 1 |
| F | Toe Kick | 1 |
| G | Drawer Box (Side/bottom panels) | 2 sets |
| H | Drawer Face | 2 |
| I | Door | 4 |
| J | Plastic Shelf Clips | 4 |
| K | Sliders & Adapter | 4 pairs |
| L | Plastic Slider holder | 4 |
| M | Hinges | 4 |
| N | Support Bracket (wooden) | 4 |



For Product lines:
 Modern Gray/Frenso Gray Shaker/Anaheim
 Gray/Beech Espresso/Cinnamon Shaker

Required Tools:

Power Drill



Rubber Hammer



**EASY ASSEMBLY
 METAL CLIP SYSTEM**



- Align Clips ① and ②
- Slide ① into ②



- Insert locking screw into clip pair
- Tighten all screws

Step-by-Step Instruction:

| Step 1 | | Step 2 | |
|--|--|---|--|
| <p>Lay back panel (C) flat, grooves facing upward</p> <p>Insert Side panel (A) on (C) and secure with metal clips (Refer to Metal clip system above)</p> | | <p>Slide bottom panel (D) into grooves of (A) and (C)</p> | |

Assmly Instruction

Base Cabinet – Double Doors & Drawers

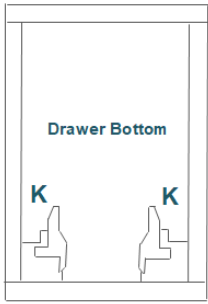
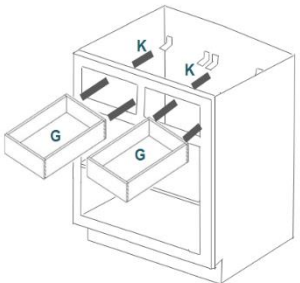
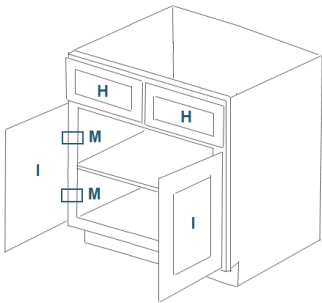
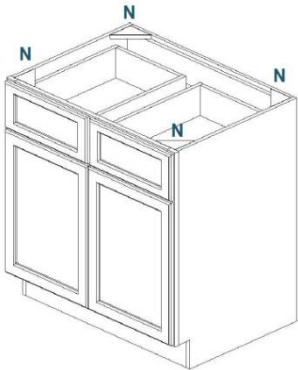


| | | | |
|--|--|--|--|
| <p>Step 3</p> <p>Attach Front frame (B) onto (A) (Referal to metal clip system above)</p> | | <p>Step 4</p> <p>Attach Toe kick (F) onto bottom front of (A) (Referal to metal clip system above)</p> | |
| <p>Step 5</p> <p>Insert Plastic shelf clips (J) onto pre-drilled holds on A</p> | | <p>Step 6</p> <p>Slide in shelf (E) and make sure the finished front edge facing out</p> | |
| <p>Step 7</p> <p>Screw both rear slider holder brackets (L) into pre-drill holes in C, angle facing upward</p> <p>Install sliders (K) into L and screw into the side of B</p> | | <p>Step 8</p> <p>Assemble both drawer boxes by using Rubber Hammer</p> <p><i>*Use wood glue for a permanent bond*</i></p> <p>(Beech espresso drawer box using screw assembly)</p> | |

Assmby Instruction

Base Cabinet – Double Doors & Drawers



| Step 9 | | Step 10 | |
|--|---|--|--|
| <p>Attach plastic adapter underneath the drawers</p> <p>There will be a letter indicating L or R side</p> |  <p>Drawer Bottom</p> <p>K K</p> | <p>Position Drawer boxes G over drawer sliders K</p> |  |
| <p>Attach both Drawer faces (H) onto drawer front</p> <p>Attach Hinge (M) on the face frame, install doors (I) onto hinge on both side</p> |  | <p>Step 12</p> <p>Place support brackets (N) into corners of A, B, C</p> |  |